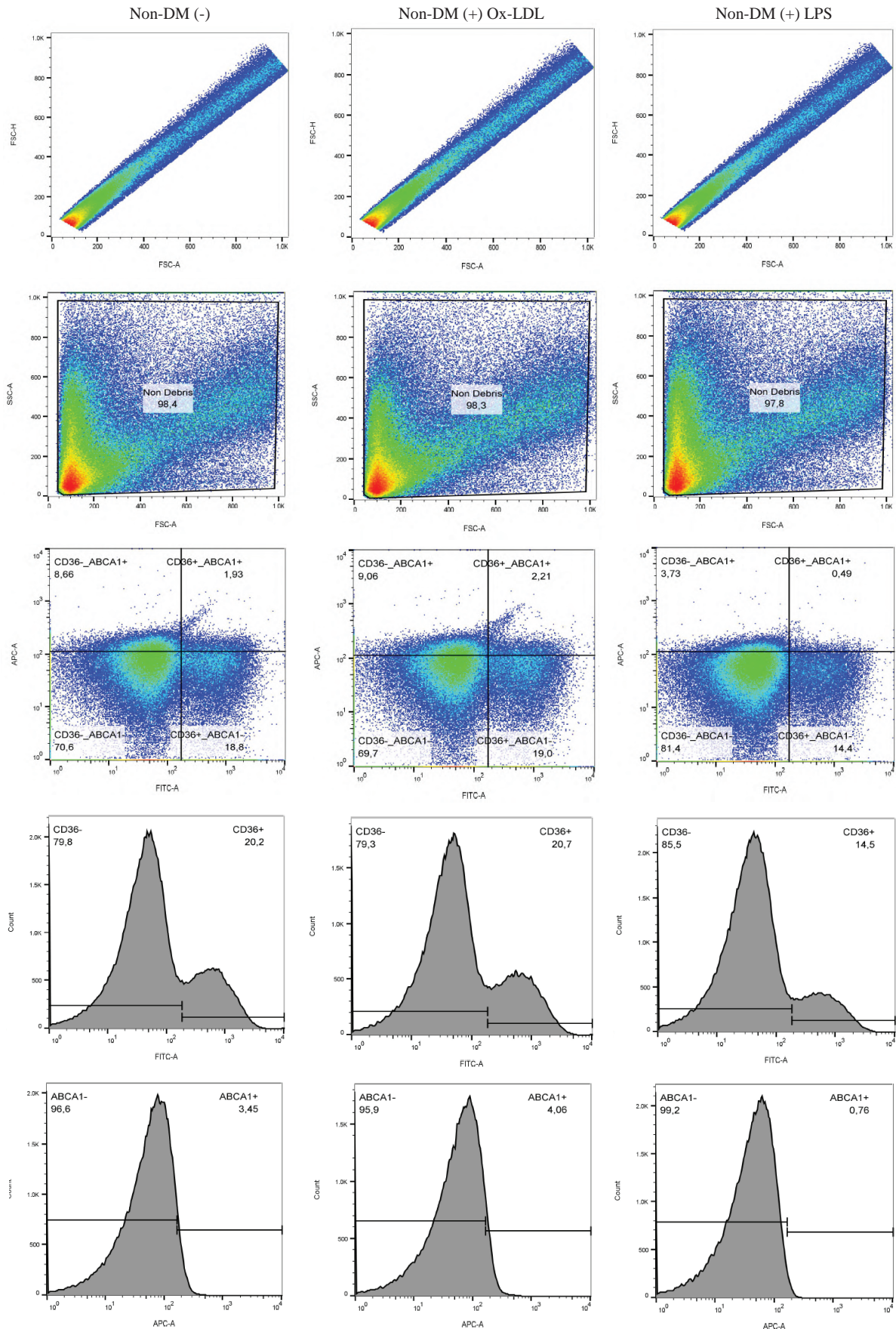
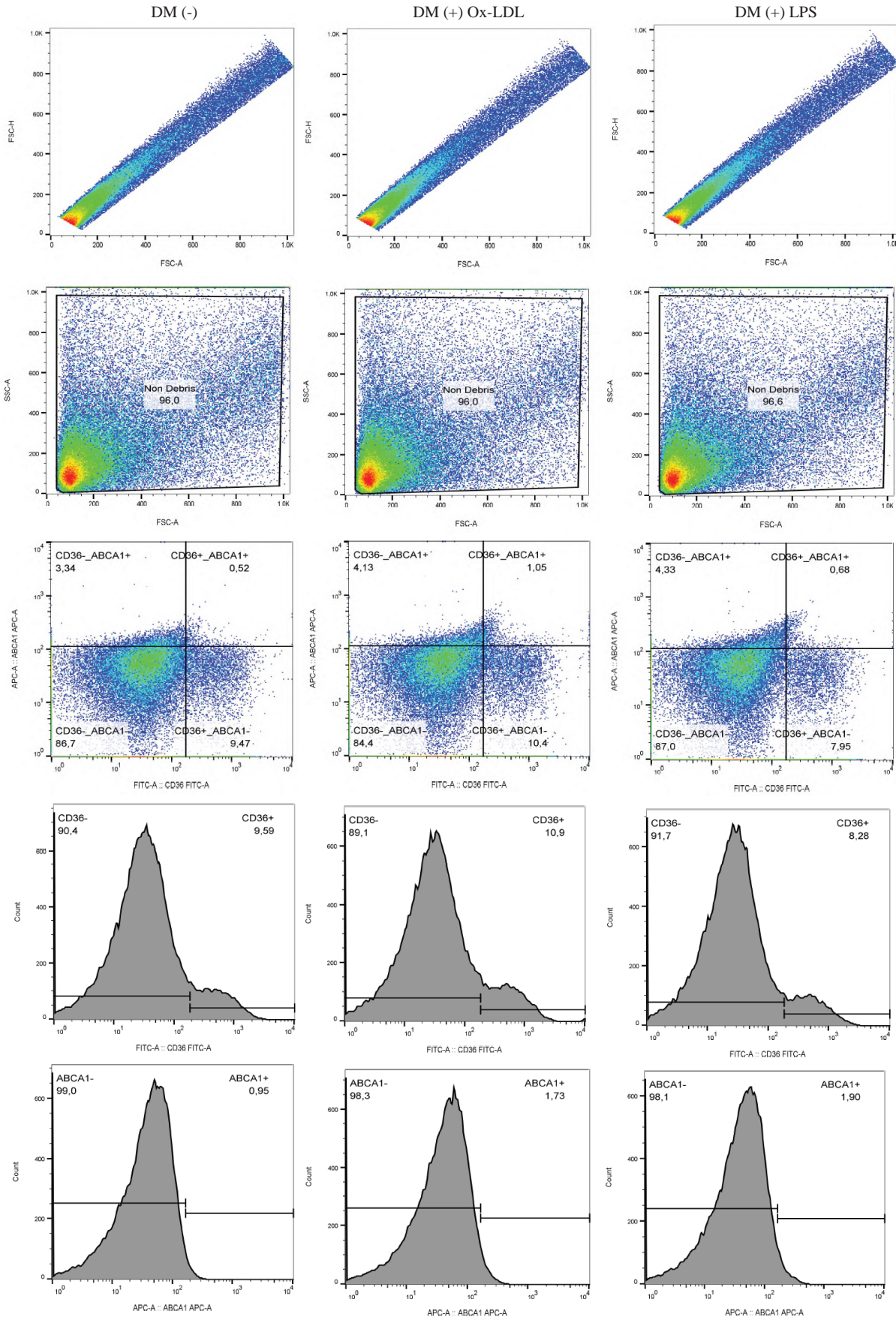
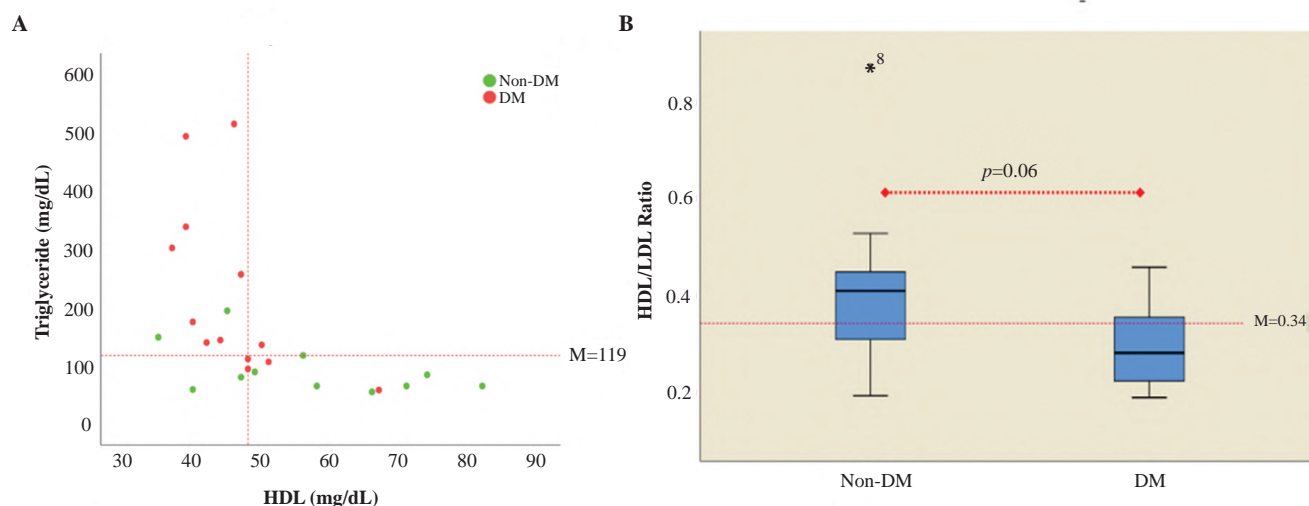


Supplementary 1.**Gating strategy for flowcytometry analysis for Non-DM/healthy donor subject.**

Supplementary 2.



Gating strategy for flowcytometry analysis for DM subject.

Supplementary 3.

Relationship between T2DM status, triglyceride, HDL/LDL ratio. A: Distribution of HDL-C and triglycerides in T2DM and non-T2DM subjects. The area was divided into 4 quadrants with a horizontal line that represent the median of triglyceride concentration (119.0 mg/dL) and a vertical line that represent the median of HDL (48 mg/dL). The red dot indicated T2DM patient and the green one indicated healthy donor. B: HDL/LDL ratio in healthy donors and T2DM subjects. HDL/LDL ratio was presented as boxplots and the significance was assessed by Mann-Whitney test.

Supplementary 4.

IL-1 β and IL-10 concentrations of macrophages cultures from healthy donors and T2DM subjects.

Cytokines	Stimuli	Healthy Subjects (n=11)	T2DM Subjects (n=13)	p-value
IL-1 β	Ox-LDL, mean \pm SD	9.94 \pm 4.97	9.1 \pm 6.86	0.741
	LPS, mean \pm SD	89.43 \pm 68.20	110.37 \pm 60.88	0.435
	Unstimulated, median (min-max)	7.26 (3.10-18.47)	7.48 (0.78-20.38)	0.649
IL-10	Ox-LDL, median (min-max)	41.13 (18.05-91.01)	45.60 (5.54- 117.38)	0.608
	LPS, median (min-max)	664.71 (146.93-2300.4)	851.61 (73-1744.42)	0.649
	Unstimulated, median (min-max)	53.04 (13.25-168.96)	34.85 (2.89-222.68)	0.459
IL-1 β /IL-10	Ox-LDL, mean \pm SD	0.23 \pm 0.09	0.35 \pm 0.31	0.195
	LPS, median (min-max)	0.09 (0.07-0.27)	0.13 (0.06-0.59)	0.106
	Unstimulated, median (min-max)	0.12 (0.05-1.25)	0.18 (0.01-0.97)	0.277